



# Rail Sustainability Summit



# **A Sustainable Railway**

**The Way Forward – Northern Powerhouse**

## Overview

- A Sustainable North
- What is Northern Powerhouse Rail?
- Rolling Stock
- Northern Power Cut?
- Sustainable Stations
- A Freight Friendly Railway
- And 30 Years From Now?

**James Howles**  
BakerHicks  
Director, Rail

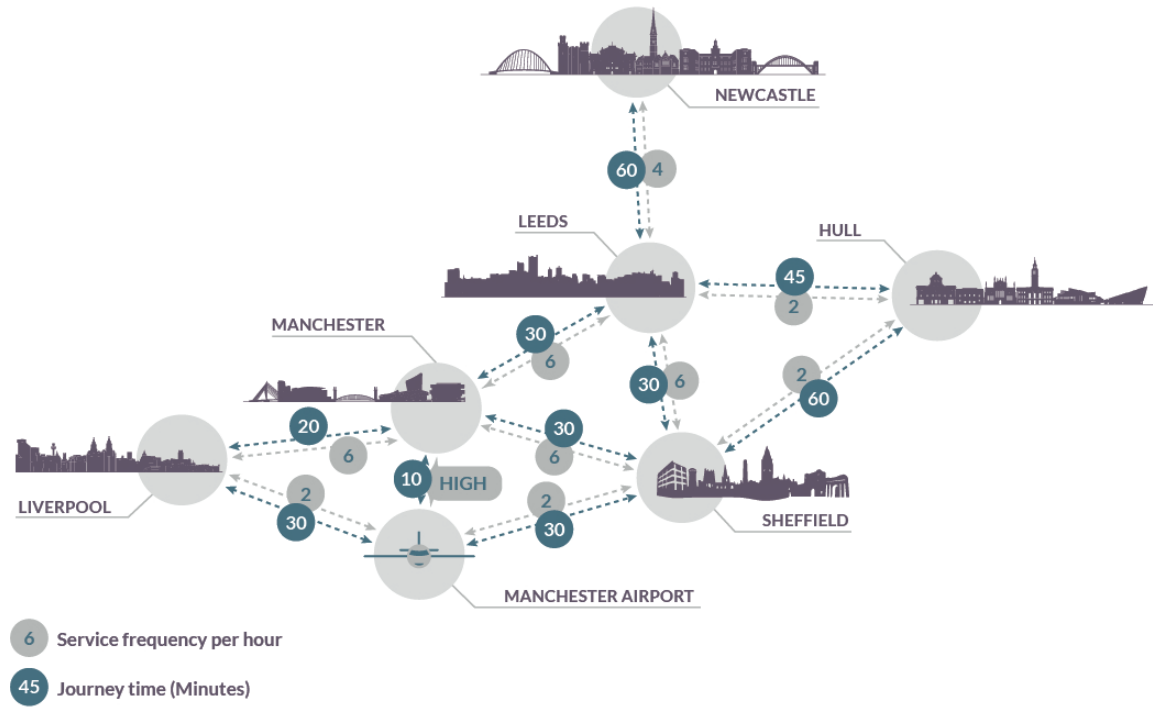


## A Sustainable North





# What is Northern Powerhouse Rail?

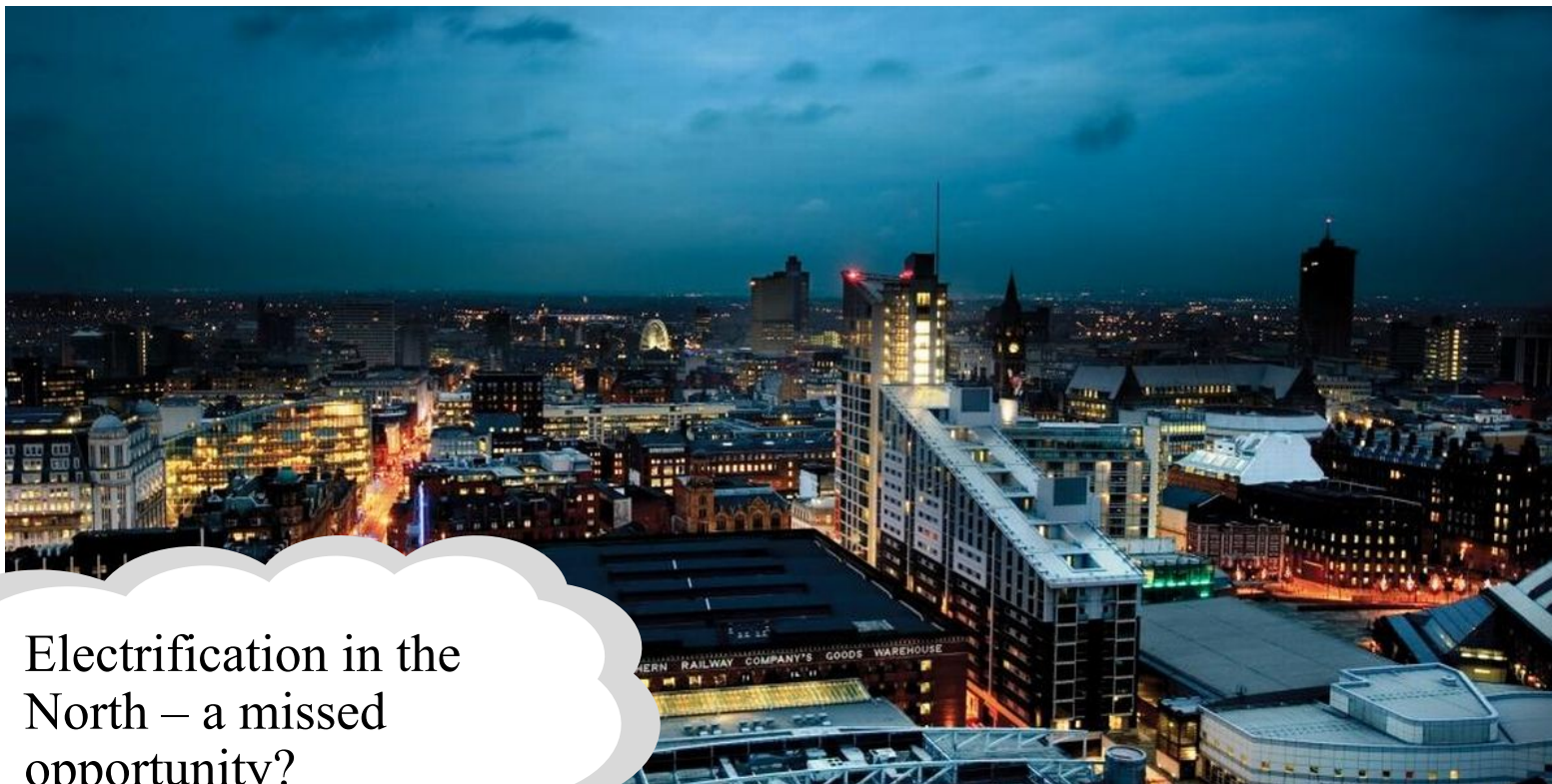


## Rolling Stock



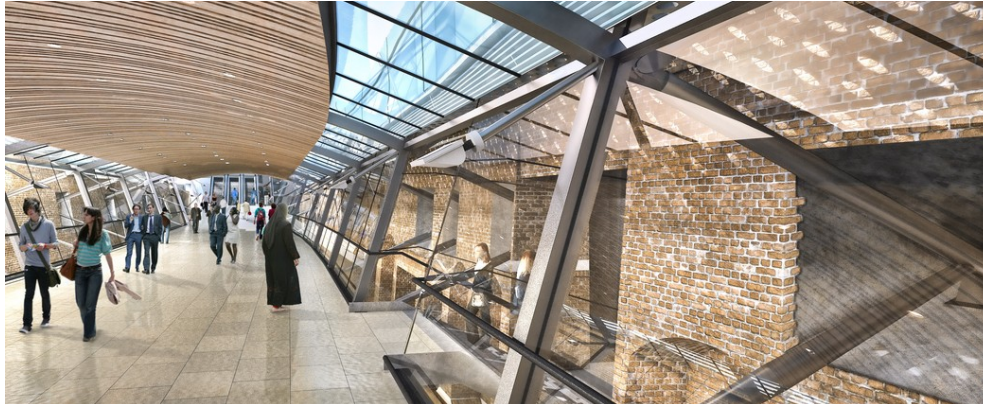


## Northern Power Cut?



Electrification in the  
North – a missed  
opportunity?

## Sustainable Stations



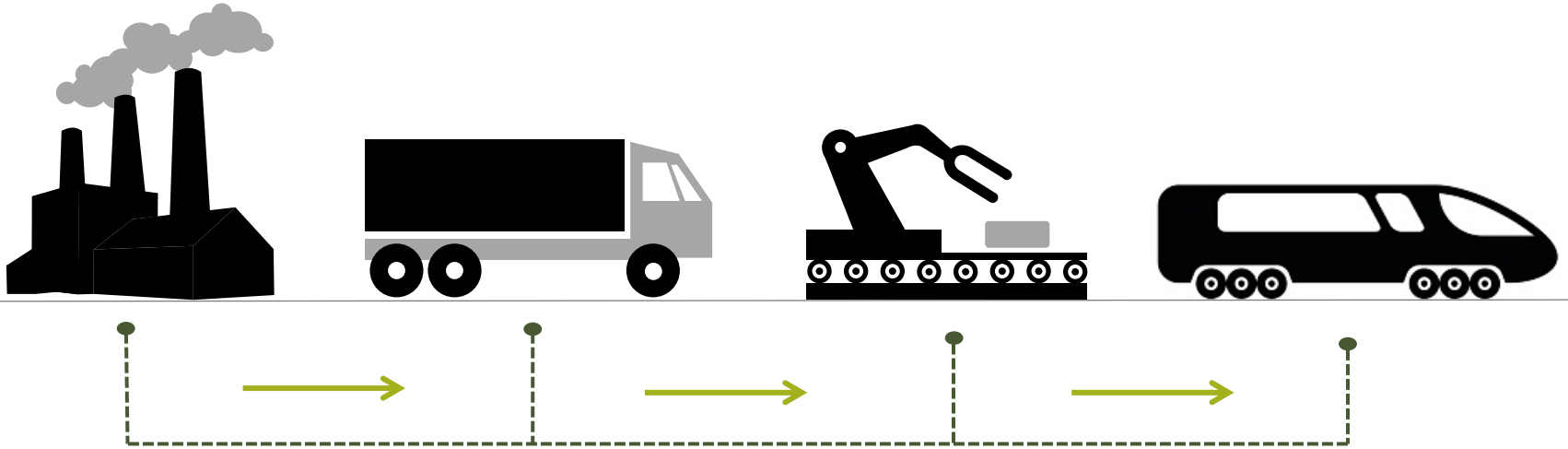


# Freight



How can we get trucks off the road and goods and materials onto the railway?

## And 30 Years from Now?



Connectivity

Questions?

The background of the slide is an abstract composition of flowing, wavy lines in various shades of green, ranging from light lime to dark forest green. The lines are layered and overlap, creating a sense of movement and depth. The overall effect is a modern, organic aesthetic.